

Solids handling 'S' pump

Pump end specification

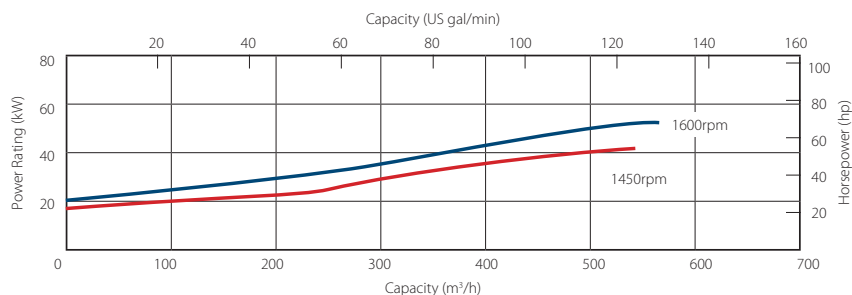
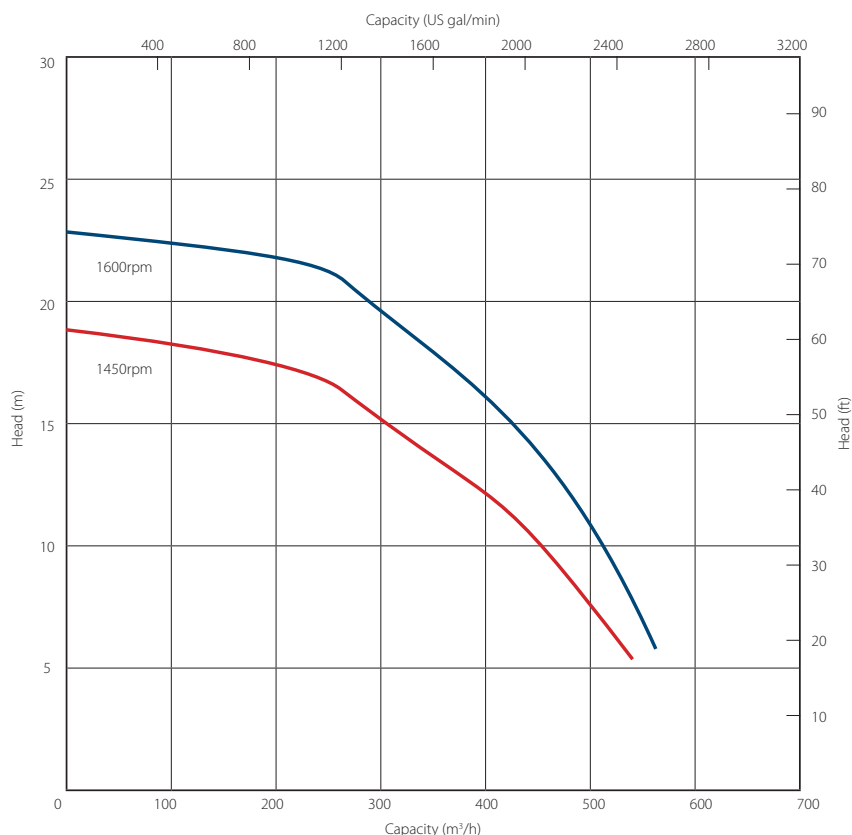
	Metric	US
Capacity	560 m ³ /h	2464 gpm
Total Head	23 m	75 ft
Max. Solids Size	100 mm	4 in
Self Priming Lift	8.8 m	28 ft
Air Handling	24 l/s	50 cfm
Selprime® Absorbs	2.2 kW	3 hp
Power Required	75 kW	101 hp
Pump Speed Max.	1600 rpm	1600 rpm
Pump Speed Min.	1000 rpm	1000 rpm
Impeller Type	Vortex	Vortex
Impeller Blades	8	8
Impeller Diameter	235 mm	9.25 in
Inlet Port	DN 200 PN6	8 PN6
Outlet Port	DN 200 PN6	8 PN6
Length	105 cm	41.4 in
Width	74 cm	29.2 in
Height	89 cm	35.0 in
Weight	335 kg	739 lb

Priming method - Selprime®

The unique original Selwood self priming system utilising a water tolerant diaphragm air pump. An environmentally friendly design that has none of the problems of oil vapour emissions and oil emulsification associated with other priming systems.

Pump end materials

Pump Casing	Grey Iron BSEN 1561 Grade EN-GJL-200
Impeller	Cast Iron BSEN 1563 Grade EN-GJS-450-10
Wear Plates	NA
Shaft	Steel BS EN 10277 Grade C40+C
NRV Body	Grey Iron BSEN 1561 Grade EN-GJL-200
Mechanical Seal	Silicon Carbide v Silicon Carbide
Pump End Bearing	Ball
Drive End Bearing	Cylindrical Roller



Solids handling 'S' pump build

Our 'S Range' pumps are the market-leader when it comes to solids handling.

The vortex-flow design (Seltorque®), Selprime® automatic self-priming, emission compliant engines and ease of operation means trouble-free pumping of

- S** raw and screened sewage
- S** sludge or slurry
- S** water with fine and large solids
- S** water containing rags and fibres



Standard build	Skid*	
	Metric	US
Length	246 cm	97 in
Width	95 cm	37 in
Height	150 cm	59 in
Dry Weight	1250 kg	2756 lb
Gross Weight	1400 kg	3086 lb
Sound Power	NA - Non EU build	
Sound Pressure @ 1m (3ft)		
Sound Pressure @ 7m (23ft)		
Pump SAE Size	bare shaft	
Engine / Motor	Kirloskar HA494	
Emission Rating	None	
Engine / Motor Max Speed	1500 rpm	1500 rpm
Fuel Tank Capacity.**	175 lt	46 US gal
BEP - Fuel Consumption	9.9 lt/hr	2.6 US gal/hr

*Open sets exclude fittings

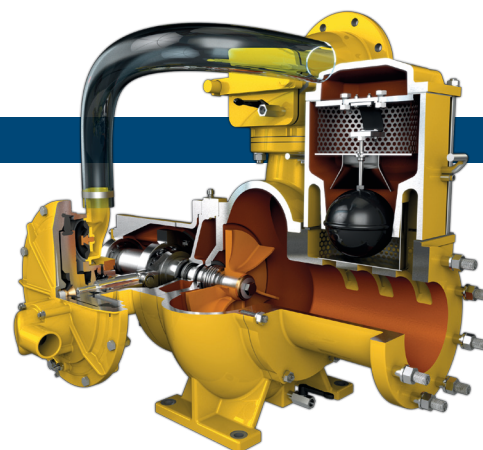
** Fuel tank capacity can be increased with the addition of an auxiliary fuel tank.

Installation drawings are available upon request.

Optional extras

Training
Genuine parts
Valves / Fittings
Pump accessories
Tanks & filtration
Pipe stoppers

Auto stop/start control panels
Pump telemetry
Oil drain kit
Bulk fuel kit
Chalwyn valve & spark arrestor
Hose / pipework



SELWOOD
www.selwood.co.uk

Bournemouth Road
Chandler's Ford, Eastleigh
Hampshire
SO53 3ZL UK

T +44(0) 23 8026 6311
E info@selwood.co.uk