

Solids handling 'S' pump

Pump end specification

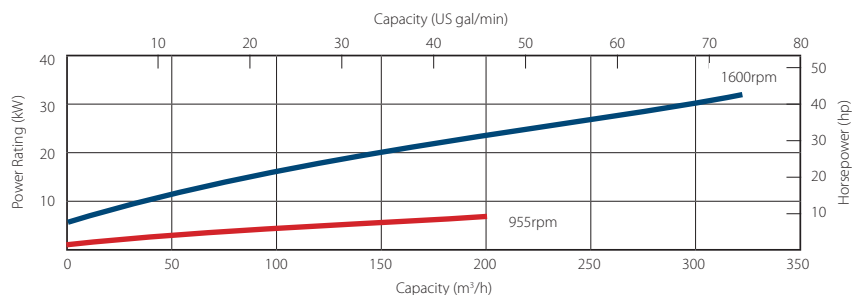
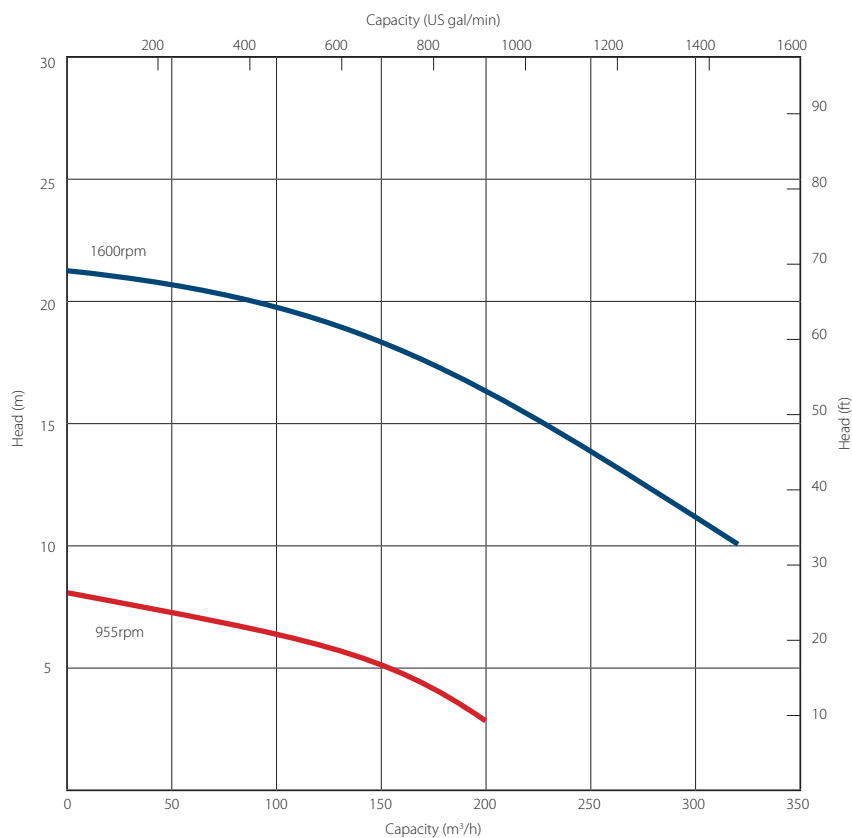
	Metric	US
Capacity	320 m ³ /h	1408 gpm
Total Head	21.3 m	70 ft
Max. Solids Size	100 mm	4 in
Self Priming Lift	8.8 m	28 ft
Air Handling	24 l/s	50 cfm
Selprime® Absorbs	2.2 kW	3 hp
Power Required	33 kW	44 hp
Pump Speed Max.	1600 rpm	1600 rpm
Pump Speed Min.	955 rpm	955rpm
Impeller Type	Vortex	Vortex
Impeller Blades	6	6
Impeller Diameter	235 mm	9.25 in
Inlet Port	DN 150 PN6	6 PN6
Outlet Port	DN 150 PN6	6 PN6
Length	102 cm	40.2 in
Width	70 cm	27.6 in
Height	82 cm	32.3 in
Weight	315 kg	694 lb

Priming method - Selprime®

The unique original Selwood self priming system utilising a water tolerant diaphragm air pump. An environmentally friendly design that has none of the problems of oil vapour emissions and oil emulsification associated with other priming systems.

Pump end materials

Pump Casing	Grey Iron BSEN 1561 Grade EN-GJL-200
Impeller	Cast Iron BSEN 1563 Grade EN-GJS-450-10
Wear Plates	NA
Shaft	Steel BS EN 10277 Grade C40+C
NRV Body	Grey Iron BSEN 1561 Grade EN-GJL-200
Mechanical Seal	Silicon Carbide v Silicon Carbide
Pump End Bearing	Ball
Drive End Bearing	Cylindrical Roller



Solids handling 'S' pump build

Our 'S Range' pumps are the market-leader when it comes to solids handling.

The vortex-flow design (Seltorque®), Selprime® automatic self-priming, emission compliant engines and ease of operation means trouble-free pumping of

- S** raw and screened sewage
- S** sludge or slurry
- S** water with fine and large solids
- S** water containing rags and fibres



Standard build	Skid*	
	Metric	US
Length	222 cm	87 in
Width	97 cm	38 in
Height	121 cm	48 in
Dry Weight	1088 kg	2398 lb
Gross Weight	1176 kg	2593lb
Sound Power	NA - Non EU build	
Sound Pressure @ 1m (3ft)		
Sound Pressure @ 7m (23ft)		
Pump SAE Size	bare shaft	
Engine / Motor	Kirloskar HA494	
Emission Rating	LRA	
Engine / Motor Max Speed	1500 rpm	1500 rpm
Fuel Tank Capacity.**	105 lt	28 US gal
BEP - Fuel Consumption	lt/hr awaiting figure	US gal/hr awaiting figure

*Open sets exclude fittings

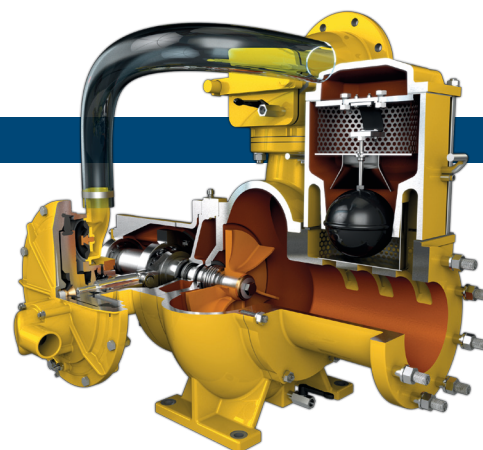
** Fuel tank capacity can be increased with the addition of an auxiliary fuel tank.

Installation drawings are available upon request.

Optional extras

Training
Genuine parts
Valves / Fittings
Pump accessories
Tanks & filtration
Pipe stoppers

Auto stop/start control panels
Pump telemetry
Oil drain kit
Bulk fuel kit
Chalwyn valve & spark arrestor
Hose / pipework



SELWOOD
www.selwood.co.uk

Bournemouth Road
Chandler's Ford, Eastleigh
Hampshire
SO53 3ZL UK

T +44(0) 23 8026 6311
E info@selwood.co.uk