

Solids handling 'S' pump

Pump end specification

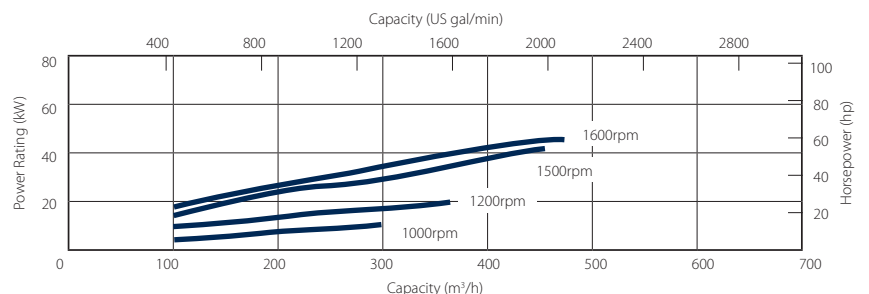
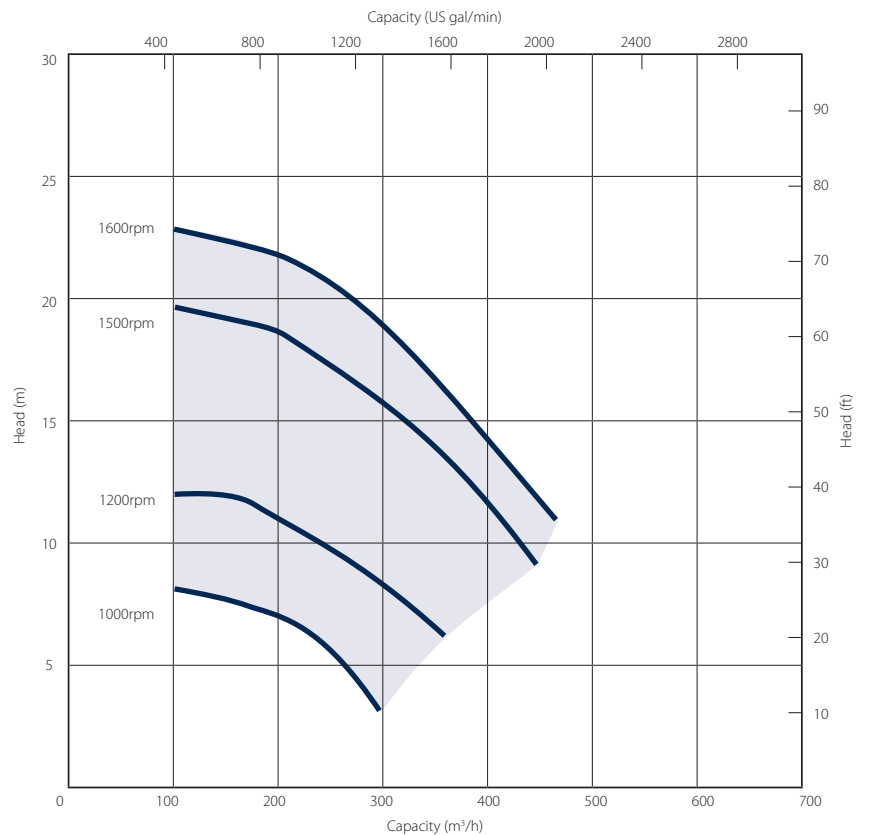
| | Metric | US |
|-------------------|-----------------------|----------|
| Capacity | 635 m ³ /h | 2794 gpm |
| Total Head | 29 m | 95 ft |
| Max. Solids Size | 100 mm | 4 in |
| Self Priming Lift | 8.8 m | 28 ft |
| Air Handling | 24 l/s | 50 cfm |
| Selprime® | 2.2 kW | 3 hp |
| Absorbs | | |
| Power Required | 75 kW | 101 hp |
| Pump Speed Max. | 1600 rpm | 1600 rpm |
| Pump Speed Min. | 1000 rpm | 1000 rpm |
| Impeller Type | Vortex | Vortex |
| Impeller Blades | 8 | 8 |
| Impeller Diameter | 235 mm | 9.25 in |
| Inlet Port | DN 200 PN6 | 8 in |
| Outlet Port | DN 200 PN6 | 8 in |
| Length | 105 cm | 41.4 in |
| Width | 74 cm | 29.2 in |
| Height | 89 cm | 35.0 in |
| Weight | 335 kg | 739 lb |

Priming method - Selprime®

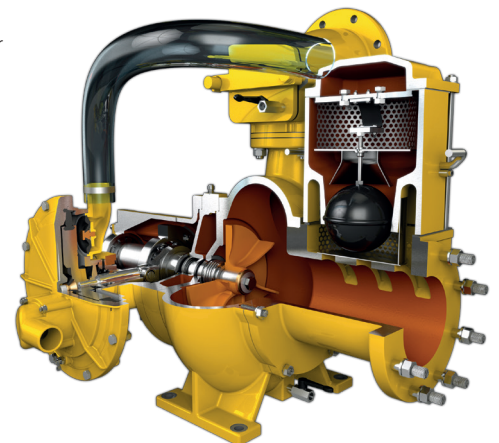
The unique original Selwood self priming system utilising a water tolerant diaphragm air pump. An environmentally friendly design that has none of the problems of oil vapour emissions and oil emulsification associated with other priming systems.

Pump end materials

| | |
|-------------------|--------------------------------------------|
| Pump Casing | Grey Iron BSEN 1561 Grade EN-GJL-200 |
| Impeller | Cast Iron BSEN 1563 Grade EN-GJS-450-10 |
| Wear Plates | NA |
| Shaft | Steel BS EN 10277 Grade C40+C |
| NRV Body | Grey Iron BSEN 1561 Grade EN-GJL-200 |
| Mechanical Seal | Silicon Carbide v Silicon Carbide |
| Pump End Bearing | Ball |
| Drive End Bearing | Cylindrical Roller |



Please note: The above curves cover the complete range and ability of the pump unit. Actual performance will be subject to the engine / motor indicated overleaf and medium pumped.



Solids handling 'S' pump

Our 'S Range' pumps are the market-leader when it comes to solids handling.

The vortex-flow design (Seltorque®), Selprime® automatic self-priming, emission compliant engines and ease of operation means trouble-free pumping of

- raw and unscreened sewage
- sludge or slurry
- water with fine and large solids
- water containing rags and fibres

Reducing environmental impact

We are committed to reducing our environmental impact by producing the most efficient equipment we can.

All Selwood Eco pumps can run on hydrotreated vegetable oil (HVO) fuel as an alternative to diesel.

Super Silent units include:-

- Quietest pumps on the market – EU directive 2000/14/EC
- Improved canopy design
- Auto stop/start control
- Oil drain kit
- Bulk fuel kit
- Remote pump monitoring



| Standard build | Deutz Super Silent Eco | |
|----------------------------|------------------------|----------------|
| | Metric | US |
| Length | 261 cm | 103 in |
| Width | 180 cm | 71 in |
| Height | 217 cm | 85 in |
| Dry Weight | 2345 kg | 5170 lb |
| Gross Weight | 2600 kg | 5732 lb |
| Sound Power | 99 LWA | |
| Sound Pressure @ 1m (3ft) | 77 db(A) | |
| Sound Pressure @ 7m (23ft) | 68 db(A) | |
| Engine | Deutz TCD3.6 | |
| Emission Rating | Stage IIIB | - |
| Engine Max Speed | 1600 rpm | |
| Fuel Tank Capacity.** | 300 lt | 79 US gal |
| BEP - Fuel Consumption | 13.2 lt/hr | 3.48 US gal/hr |

** Fuel tank capacity can be increased with the addition of an auxiliary fuel tank.

Installation drawings are available upon request.

Remote pump monitoring

SelWatch

- Remote pump condition monitoring
- Cloud based information management telemetry system
- Monitor pump & engine conditions via Canbus module which links the engine and ECU
- Ability to measure a multitude of pump & engine conditions including:-
 - Discharge & suction pressure
 - Engine speed
 - Fuel conditions
 - Engine temperature

Please note: SelWatch may not be available in all territories. Contact your local Selwood Sales Manager or Distributor for details.

Optional extras

- Training
- Genuine parts kits
- Valves / Fittings
- Pump accessories
- Tanks & filtration
- Pipe stoppers
- Hose / pipework

SELWOOD
www.selwood.co.uk

UK Rental
03330 142000

UK Sales
023 8025 0137

International Sales
+44 23 8025 0137

Head Office Bournemouth Road, Chandler's Ford, Eastleigh, Hampshire, SO53 3ZL. T 023 8026 6311 E info@selwood.co.uk