

# Solids handling 'S' pump

## Pump end specification

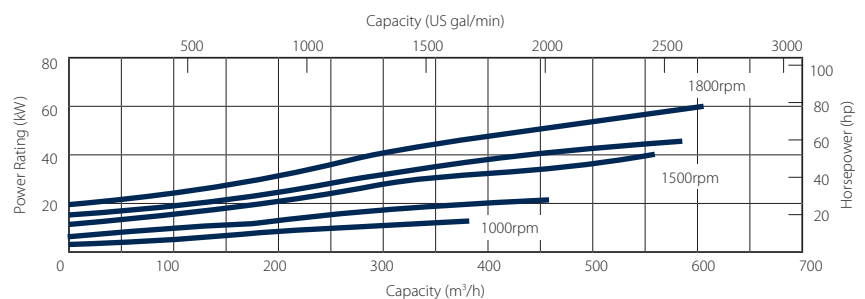
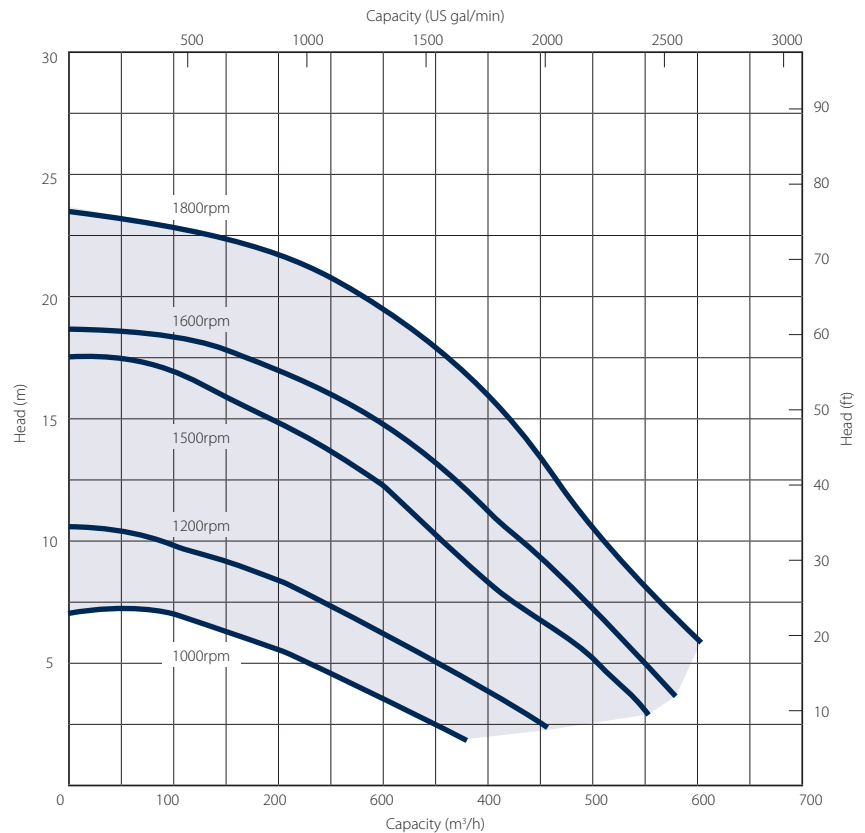
	Metric	US
Capacity	600 m <sup>3</sup> /h	2642 gpm
Total Head	23 m	75 ft
Max. Solids Size	100 mm	4 in
Self Priming Lift	8.8 m	28 ft
Air Handling	24 l/s	50 cfm
Selprime® Absorbs	2.2 kW	3 hp
Power Required	51 kW	68 hp
Pump Speed Max.	1800 rpm	1800 rpm
Impeller Type	Vortex	Vortex
Impeller Blades	8	8
Impeller Diameter	220 mm	8.66 in
Inlet Port	DN 200 PN6	8 in
Outlet Port	DN 200 PN6	8 in

## Priming method - Selprime®

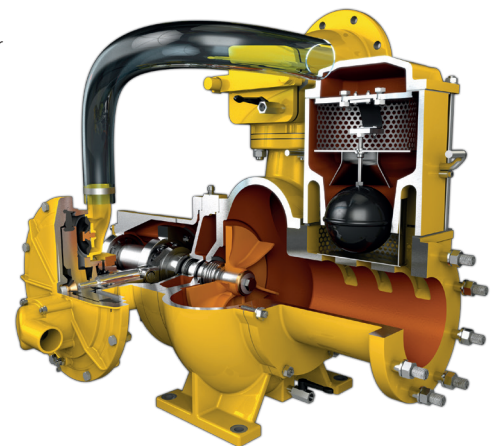
The unique original Selwood self priming system utilising a water tolerant diaphragm air pump. An environmentally friendly design that has none of the problems of oil vapour emissions and oil emulsification associated with other priming systems.

## Pump end materials

Pump Casing	Grey Iron BSEN 1561 Grade EN-GJL-200
Impeller	Cast Iron BSEN 1563 Grade EN-GJS-450-10
Wear Plates	NA
Shaft	Steel BS EN 10277 Grade C40+C
NRV Body	Grey Iron BSEN 1561 Grade EN-GJL-200
Mechanical Seal	Silicon Carbide v Silicon Carbide
Pump End Bearing	Ball
Drive End Bearing	Cylindrical Roller



**Please note:** The above curves cover the complete range and ability of the pump unit. Actual performance will be subject to the engine / motor indicated overleaf and medium pumped.



# Solids handling 'S' pump

**Our 'S Range' pumps are the market-leader when it comes to solids handling.**

The vortex-flow design (Seltorque®), Selprime® automatic self-priming, emission compliant engines and ease of operation means trouble-free pumping of

- raw and unscreened sewage
- sludge or slurry
- water with fine and large solids
- water containing rags and fibres

## Reducing environmental impact

We are committed to reducing our environmental impact by producing the most efficient equipment we can.

All Selwood Eco5 pumps can run on hydrotreated vegetable oil (HVO) fuel as an alternative to diesel.

## Super Silent units include:-

- Quietest pumps on the market – EU directive 2000/14/EC
- Improved canopy design
- Auto stop/start control
- Oil drain kit
- Bulk fuel kit
- Remote pump monitoring



Standard build	Deutz Super Silent Eco5	
	Metric	US
Length	240 cm	95 in
Width	140 cm	55 in
Height	217 cm	85 in
Dry Weight	2450 kg	5291 lb
Gross Weight	2700 kg	5953 lb
Sound Power	100 LWA	
Sound Pressure @ 1m (3ft)	78 db(A)	
Sound Pressure @ 7m (23ft)	70 db(A)	
Engine	Deutz TCD3.6	
Emission Rating	Stage V	Tier 4 Final
Engine Speed - Max	<b>1800 rpm</b>	
Engine Speed - Min	<b>980 rpm</b>	
Fuel Tank Capacity.**	300 lt	79 US gal
BEP - Fuel Consumption	9.75 lt/hr	2.56 US gal/hr

\*\* Fuel tank capacity can be increased with the addition of an auxiliary fuel tank.

Installation drawings are available upon request.

## Remote pump monitoring

### SelWatch

- Remote pump condition monitoring
- Cloud based information management telemetry system
- Monitor pump & engine conditions via Canbus module which links the engine and ECU
- Ability to measure a multitude of pump & engine conditions including:-
  - Discharge & suction pressure
  - Engine speed
  - Fuel conditions
  - Engine temperature

**Please note:** SelWatch may not be available in all territories. Contact your local Selwood Sales Manager or Distributor for details.

## Optional extras

- Training
- Genuine parts kits
- Valves / Fittings
- Pump accessories
- Tanks & filtration
- Pipe stoppers
- Hose / pipework

**SELWOOD**  
www.selwood.co.uk

**UK Rental**  
03330 142000

**UK Sales**  
023 8025 0137

**International Sales**  
+44 23 8025 0137

Head Office Bournemouth Road, Chandler's Ford, Eastleigh, Hampshire, SO53 3ZL. T 023 8026 6311 E info@selwood.co.uk