

Solids handling 'S' pump

Pump end specification

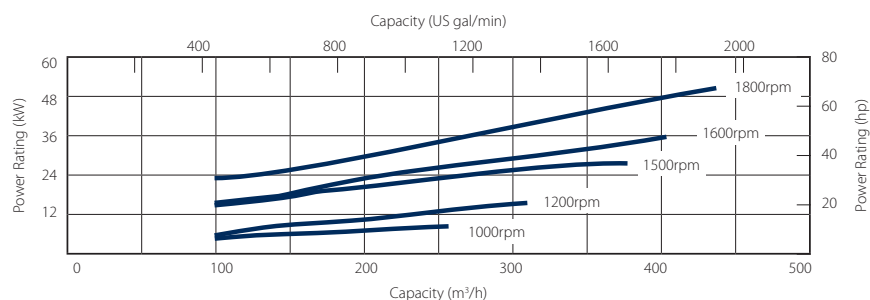
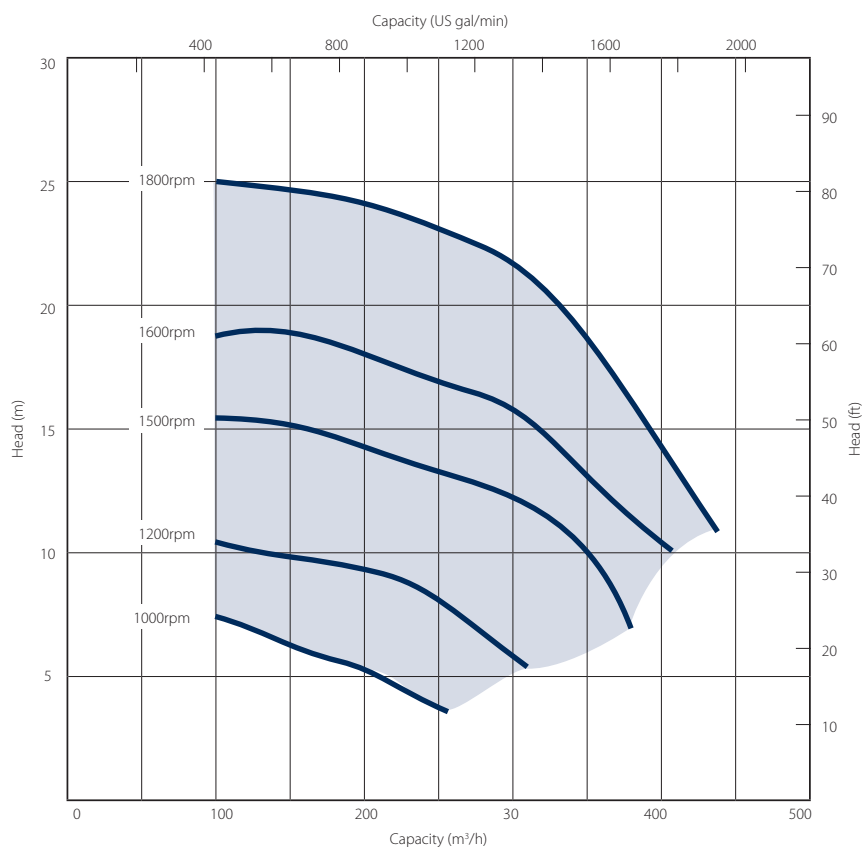
	Metric	US
Capacity	440 m ³ /h	1936 gpm
Total Head	25 m	95 ft
Max. Solids Size	100 mm	4 in
Self Priming Lift	8.8 m	28 ft
Air Handling	24 l/s	50 cfm
Selprime® Absorbs	2.2 kW	3 hp
Power Required	75 kW	101 hp
Pump Speed Max.	1800 rpm	1800 rpm
Pump Speed Min.	980 rpm	980 rpm
Impeller Type	Vortex	Vortex
Impeller Blades	8	8
Impeller Diameter	220 mm	8.66 in
Inlet Port	DN 200 PN6	8 in
Outlet Port	DN 200 PN6	8 in
Length	105 cm	41.4 in
Width	74 cm	29.2 in
Height	89 cm	35.0 in
Weight	335 kg	739 lb

Priming method - Selprime®

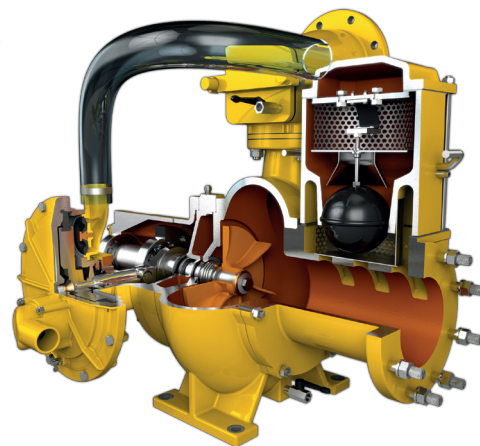
The unique original Selwood self priming system utilising a water tolerant diaphragm air pump. An environmentally friendly design that has none of the problems of oil vapour emissions and oil emulsification associated with other priming systems.

Pump end materials

Pump Casing	Grey Iron BSEN 1561 Grade EN-GJL-200
Impeller	Cast Iron BSEN 1563 Grade EN-GJS-450-10
Wear Plates	NA
Shaft	Steel BS EN 10277 Grade C40+C
NRV Body	Grey Iron BSEN 1561 Grade EN-GJL-200
Mechanical Seal	Silicon Carbide v Silicon Carbide
Pump End Bearing	Ball
Drive End Bearing	Cylindrical Roller



Please note: The above curves cover the complete range and ability of the pump unit. Actual performance will be subject to the engine / motor indicated overleaf and medium pumped.



Solids handling 'S' pump

Our 'S Range' pumps are the market-leader when it comes to solids handling.

The vortex-flow design (Seltorque®), Selprime® automatic self-priming, emission compliant engines and ease of operation means trouble-free pumping of

- raw and unscreened sewage
- sludge or slurry
- water with fine and large solids
- water containing rags and fibres

The Eco range

At Selwood we are committed to reducing our environmental impact by producing the most efficient equipment we can. This includes the production of our Eco range of pumps, featuring stop/start technology, Tier 4 engines and our Super Silent canopies reducing noise pollution.

Super Silent units include:-

- Quietest pumps on the market – EU directive 2000/14/EC
- Improved canopy design
- Auto stop/start control
- Oil drain kit
- Bulk fuel kit
- Remote pump monitoring



Standard build	Deutz Super Silent Eco5	
	Metric	US
Length	240 cm	95 in
Width	140 cm	55 in
Height	217 cm	85 in
Dry Weight	2450 kg	5291 lb
Gross Weight	2700 kg	5953 lb
Sound Power	100 LWA	
Sound Pressure @ 1m (3ft)	78 db(A)	
Sound Pressure @ 7m (23ft)	70 db(A)	
Engine	Deutz TCD3.6	
Emission Rating	Stage V	Tier 4
Engine Max Speed	1800 rpm	
Fuel Tank Capacity.**	300 lt	79 US gal
BEP - Fuel Consumption	9.75 lt/hr	2.56 US gal/hr

** Fuel tank capacity can be increased with the addition of an auxiliary fuel tank.

Installation drawings are available upon request.

Remote pump monitoring

SelWatch

- Remote pump condition monitoring
- Cloud based information management telemetry system
- Monitor pump & engine conditions via Canbus module which links the engine and ECU
- Ability to measure a multitude of pump & engine conditions including:-
 - Discharge & suction pressure
 - Engine speed
 - Fuel conditions
 - Engine temperature

Please note: SelWatch may not be available in all territories. Contact your local Selwood Sales Manager or Distributor for details.

Optional extras

- Training
- Genuine parts kits
- Valves / Fittings
- Pump accessories
- Tanks & filtration
- Pipe stoppers
- Hose / pipework

SELWOOD
www.selwood.co.uk

UK Rental
03330 142000

UK Sales
023 8025 0137

International Sales
+44 23 8025 0137

Head Office Bournemouth Road, Chandler's Ford, Eastleigh, Hampshire, SO53 3ZL. T 023 8026 6311 E info@selwood.co.uk