

# Solids handling 'S' pump

## Pump end specification

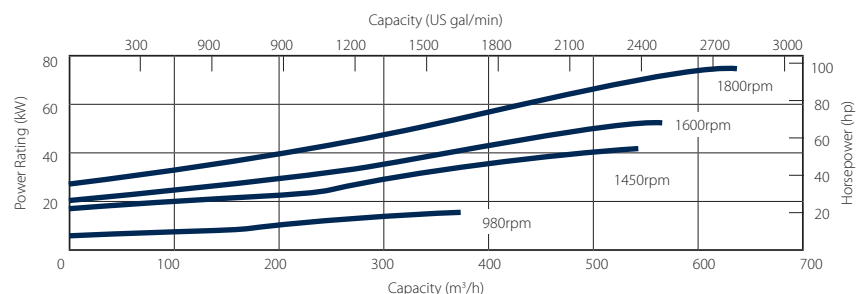
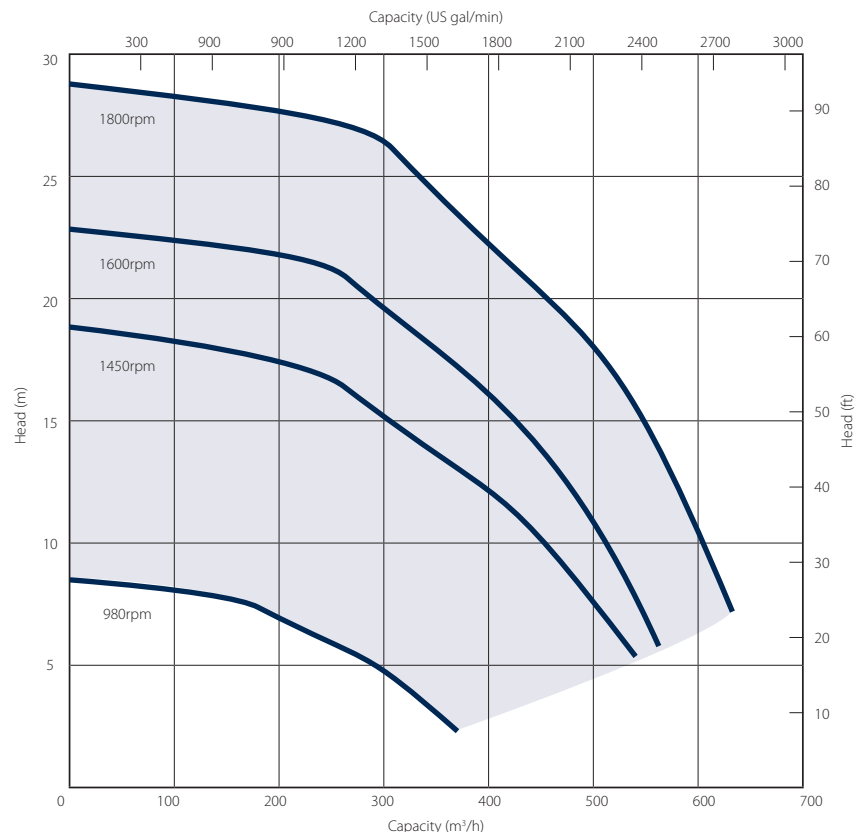
	Metric	US
Capacity	635 m³/h	2794 gpm
Total Head	29 m	95 ft
Max. Solids Size	100 mm	4 in
Self Priming Lift	8.8 m	28 ft
Air Handling	24 l/s	50 cfm
Selprime®	2.2 kW	3 hp
Absorbs		
Power Required	75 kW	101 hp
Pump Speed Max.	1800 rpm	1800 rpm
Pump Speed Min.	980 rpm	980 rpm
Impeller Type	Vortex	Vortex
Impeller Blades	8	8
Impeller Diameter	235 mm	9.25 in
Inlet Port	DN 200 PN6	8 in
Outlet Port	DN 200 PN6	8 in
Length	105 cm	41.4 in
Width	74 cm	29.2 in
Height	89 cm	35.0 in
Weight	335 kg	739 lb

## Priming method - Selprime®

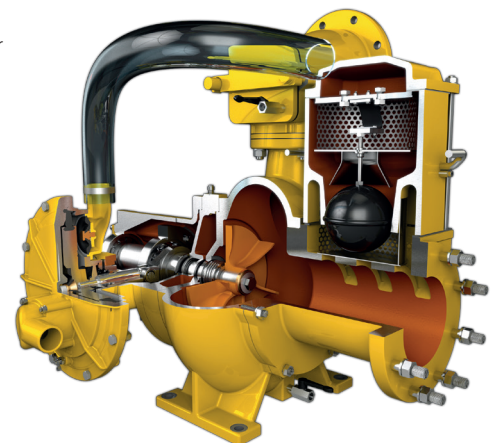
The unique original Selwood self priming system utilising a water tolerant diaphragm air pump. An environmentally friendly design that has none of the problems of oil vapour emissions and oil emulsification associated with other priming systems.

## Pump end materials

Pump Casing	Grey Iron BSEN 1561 Grade EN-GJL-200
Impeller	Cast Iron BSEN 1563 Grade EN-GJS-450-10
Wear Plates	NA
Shaft	Steel BS EN 10277 Grade C40+C
NRV Body	Grey Iron BSEN 1561 Grade EN-GJL-200
Mechanical Seal	Silicon Carbide v Silicon Carbide
Pump End Bearing	Ball
Drive End Bearing	Cylindrical Roller



**Please note:** The above curves cover the complete range and ability of the pump unit. Actual performance will be subject to the engine / motor indicated overleaf and medium pumped.



# Solids handling 'S' pump

**Our 'S Range' pumps are the market-leader when it comes to solids handling.**

The vortex-flow design (Seltorque®), Selprime® automatic self-priming, emission compliant engines and ease of operation means trouble-free pumping of

- raw and unscreened sewage
- sludge or slurry
- water with fine and large solids
- water containing rags and fibres

**The Kirloskar build is a value-engineered option for lesser regulated areas.**



Standard build	Deutz Super Silent	
	Metric	US
Length	261 cm	103 in
Width	180 cm	71 in
Height	217 cm	85 in
Dry Weight	2345 kg	5170 lb
Gross Weight	2600 kg	5732 lb
Sound Power	99 LWA	
Sound Pressure @ 1m (3ft)	77 db(A)	
Sound Pressure @ 7m (23ft)	68 db(A)	
Pump SAE Size	SAE 3	
Engine	Deutz TCD3.6	
Emission Rating	Stage IIIB	-
Engine Max Speed	1600 rpm	
Fuel Tank Capacity.**	300 lt	79 US gal
BEP - Fuel Consumption	13.2 lt/hr	3.48 US gal/hr

\*Open sets exclude fittings

\*\* Fuel tank capacity can be increased with the addition of an auxiliary fuel tank.

Installation drawings are available upon request.

## Optional extras

- Training
  - Genuine parts kits
  - Valves / Fittings
  - Pump accessories
  - Hose / pipework
- Auto stop/start control panels
  - Pump telemetry
  - Oil drain kit
  - Bulk fuel kit
- Tanks & filtration
  - Pipe stoppers
  - Chalwyn valve & spark arrestor

**SELWOOD**  
www.selwood.co.uk

**UK Rental**  
03330 142000

**UK Sales**  
023 8025 0137

**International Sales**  
+44 23 8025 0137

Head Office Bournemouth Road, Chandler's Ford, Eastleigh, Hampshire, SO53 3ZL. T 023 8026 6311 E info@selwood.co.uk

# Electric solids handling 'S' pump

Our 'S Range' pumps are the market-leader when it comes to solids handling.

The vortex-flow design (Seltorque®), Selprime® automatic self-priming, emission compliant engines and ease of operation means trouble-free pumping of

- raw and unscreened sewage
- sludge or slurry
- water with fine and large solids
- water containing rags and fibres



Standard builds	45 kW Skid*		45 kW Super Silent		75 kW Skid*		75 kW Super Silent	
	Metric	US	Metric	US	Metric	US	Metric	US
Length	252 cm	99 in	271 cm	107 in	252 cm	99 in	250 cm	98 in
Width	121 cm	48 in	152 cm	60 in	124 cm	48 in	152 cm	60 in
Height	158 cm	62 in	180 cm	71 in	171 cm	67 in	180 cm	71 in
Gross Weight	1200 kg	2646 lb	2120 kg	4664 lb	1475 kg	3252 lb	TBA	TBA
Sound Power	106 LWA		92 LWA		103 LWA		92 LWA	
Sound Pressure @ 1m (3ft)	83 db(A)		69 db(A)		81 db(A)		69 db(A)	
Sound Pressure @ 7m (23ft)	74 db(A)		60 db(A)		76 db(A)		65 db(A)	
Motor	45kW 400/3/50	60 hp	45kW 400/3/50	60 hp	75kW 400/3/50	100 hp	75kW 400/3/50	100 hp
Electrical Rating	IE3	-	IE3	-	IE3	-	IE3	-
Motor Max Speed	1500 rpm		1500 rpm		1800 rpm		1800 rpm	

\*Open sets exclude fittings

Installation drawings are available upon request.

## Optional extras

- Training
- Genuine parts kits
- Valves / Fittings
- Pump accessories
- Hose / pipework
- Auto stop/start control panels
- Pump telemetry
- Oil drain kit
- DOL panels
- Soft Start panels
- Variable speed drive panels
- Tanks & filtration
- Pipe stoppers
- Ultra-sonic level control panels

**SELWOOD**  
www.selwood.co.uk

UK Rental  
03330 142000

UK Sales  
023 8025 0137

International Sales  
+44 23 8025 0137

Head Office Bournemouth Road, Chandler's Ford, Eastleigh, Hampshire, SO53 3ZL. T 023 8026 6311 E info@selwood.co.uk