

# Solids handling 'S' pump

## Pump end specification

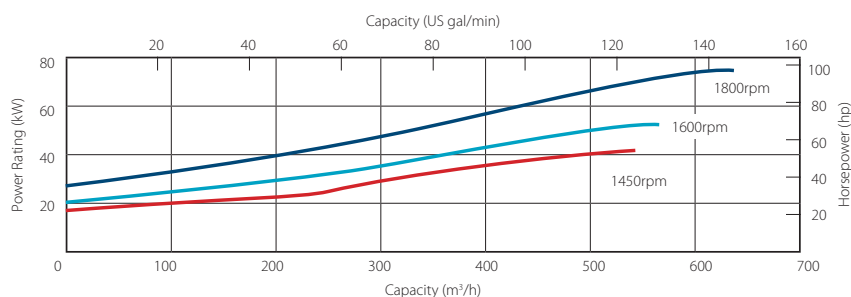
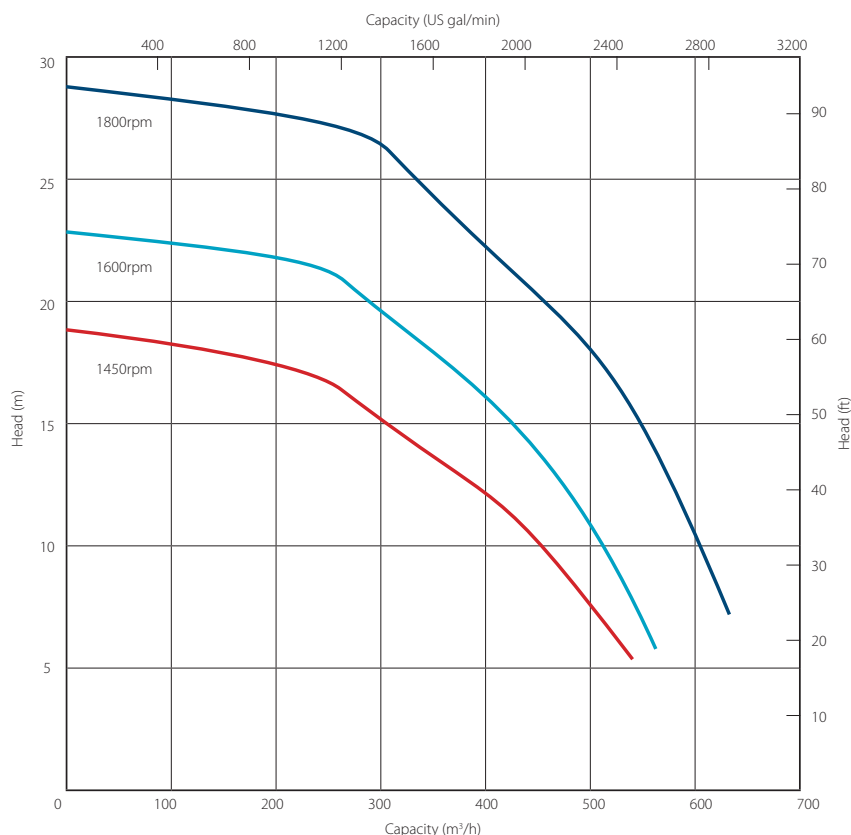
	Metric	US
Capacity	635 m <sup>3</sup> /h	2794 gpm
Total Head	29 m	95 ft
Max. Solids Size	100 mm	4 in
Self Priming Lift	8.8 m	28 ft
Air Handling	24 l/s	50 cfm
Selprime® Absorbs	2.2 kW	3 hp
Power Required	75 kW	101 hp
Pump Speed Max.	1800 rpm	1800 rpm
Pump Speed Min.	1000 rpm	1000 rpm
Impeller Type	Vortex	Vortex
Impeller Blades	8	8
Impeller Diameter	235 mm	9.25 in
Inlet Port	DN 200 PN6	8 PN6
Outlet Port	DN 200 PN6	8 PN6
Length	105 cm	41.4 in
Width	74 cm	29.2 in
Height	89 cm	35.0 in
Weight	335 kg	739 lb

## Priming method - Selprime®

The unique original Selwood self priming system utilising a water tolerant diaphragm air pump. An environmentally friendly design that has none of the problems of oil vapour emissions and oil emulsification associated with other priming systems.

## Pump end materials

Pump Casing	Grey Iron BSEN 1561 Grade EN-GJL-200
Impeller	Cast Iron BSEN 1563 Grade EN-GJS-450-10
Wear Plates	NA
Shaft	Steel BS EN 10277 Grade C40+C
NRV Body	Grey Iron BSEN 1561 Grade EN-GJL-200
Mechanical Seal	Silicon Carbide v Silicon Carbide
Pump End Bearing	Ball
Drive End Bearing	Cylindrical Roller



# Solids handling 'S' pump build

**Our 'S Range' pumps are the market-leader when it comes to solids handling.**

The vortex-flow design (Seltorque®), Selprime® automatic self-priming, emission compliant engines and ease of operation means trouble-free pumping of

- S** raw and screened sewage
- S** sludge or slurry
- S** water with fine and large solids
- S** water containing rags and fibres



Standard build	Super Silent	
	Metric	US
Length	261 cm	103 in
Width	180 cm	71 in
Height	217 cm	85 in
Dry Weight	2345 kg	5170 lb
Gross Weight	2600 kg	5732 lb
Sound Power	99 LWA	
Sound Pressure @ 1m (3ft)	77 db(A)	
Sound Pressure @ 7m (23ft)	68 db(A)	
Pump SAE Size	SAE 3	
Engine / Motor	Deutz TCD3.6	
Emission Rating	EU Stage IIIB	
Engine / Motor Max Speed	1600 rpm	
Fuel Tank Capacity.**	300 lt	79 US gal
BEP - Fuel Consumption	lt/hr awaiting figure	US gal/hr awaiting figure

\*Open sets exclude fittings

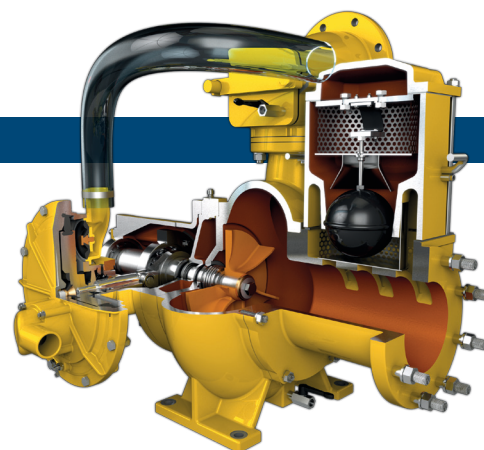
\*\* Fuel tank capacity can be increased with the addition of an auxiliary fuel tank.

Installation drawings are available upon request.

## Optional extras

Training  
Genuine parts  
Valves / Fittings  
Pump accessories  
Tanks & filtration  
Pipe stoppers

Auto stop/start control panels  
Pump telemetry  
Oil drain kit  
Bulk fuel kit  
Chalwyn valve & spark arrestor  
Hose / pipework



**SELWOOD**  
[www.selwood.co.uk](http://www.selwood.co.uk)

Bournemouth Road  
Chandler's Ford, Eastleigh  
Hampshire  
SO53 3ZL UK

**T** +44(0) 23 8026 6311  
**E** [info@selwood.co.uk](mailto:info@selwood.co.uk)