

Solids handling 'S' pump

Pump end specification

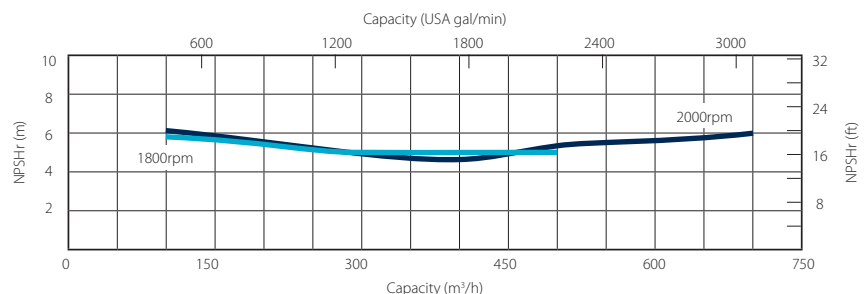
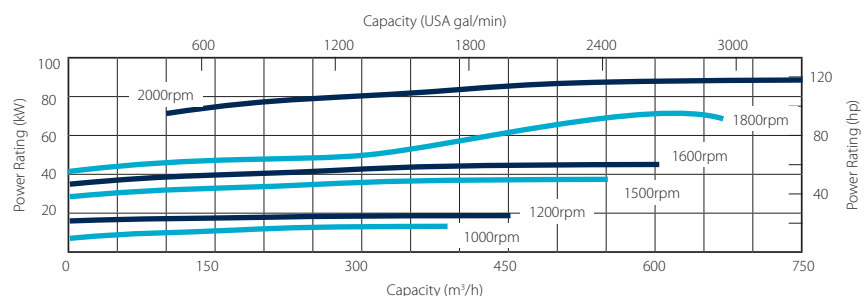
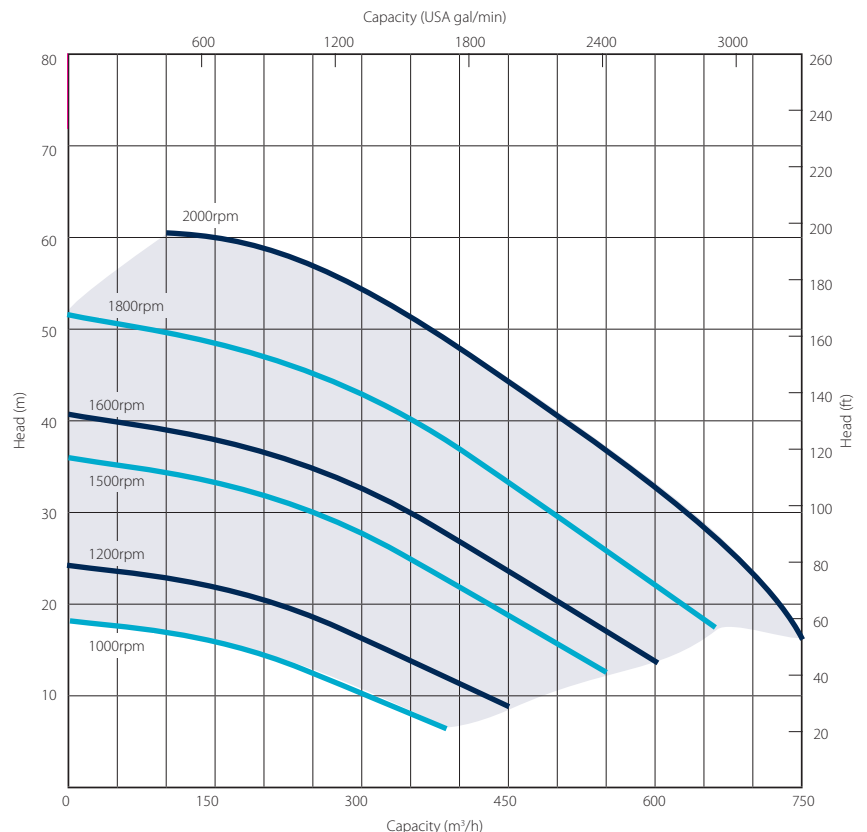
	Metric	US
Capacity	750 m ³ /h	3302 gpm
Total Head	60 m	197 ft
Max. Solids Size	76 mm	3 in
Self Priming Lift	8.8 m	29 ft
Air Handling	24 l/s	50 cfm
Selprime®	2.2 kW	3 hp
Absorbs		
Power Required	100 kW	134 hp
Pump Speed Max.	2000 rpm	2000 rpm
Impeller Type	Semi Open	Semi Open
Impeller Blades	2	2
Impeller Diameter	340 mm	13.38 in
Inlet Port	DN 200 PN10	8 in
Outlet Port	DN 150 PN10	6 in

Priming method - Selprime®

The unique original Selwood self priming system utilising a water tolerant diaphragm air pump. An environmentally friendly design that has none of the problems of oil vapour emissions and oil emulsification associated with other priming systems.

Pump end materials

Pump Casing	SG Iron 500/7
Impeller	Stainless Steel 316
Wear Plates	Stainless Steel 316
Shaft	Stainless Steel 431
NRV Body	Cast Iron Grade 220
Mechanical Seal	Silicon Carbide v Silicon Carbide
Pump End Bearing	Taper Roller
Drive End Bearing	Taper Roller



Please note: The above curve covers the complete range and ability of the pump unit. Actual performance will be subject to the motor/engine indicated overleaf.

Solids handling 'S' pump builds

Our 'S Range' pumps are the market-leader when it comes to solids handling.

A screw impellor, Selprime® automatic self-priming, emission compliant engines and ease of operation means trouble-free pumping of

- raw and unscreened sewage
- sludge or slurry
- water with fine and large solids
- water containing rags and fibres

Reducing environmental impact

We are committed to reducing our environmental impact by producing the most efficient equipment we can.

All Selwood Eco4 pumps can run on hydrotreated vegetable oil (HVO) fuel as an alternative to diesel.

Super Silent units include:-

- Quietest pumps on the market – EU directive 2000/14/EC
- Improved canopy design
- Auto stop/start control
- Oil drain kit
- Bulk fuel kit
- Remote pump monitoring



Standard builds	CAT Super Silent Eco4M	
	Metric	US
Length	300 cm	118 in
Width	140 cm	55 in
Height	218 cm	86 in
Dry Weight	3150 kg	6930 lb
Gross Weight	3490 kg	7678 lb
Sound Power	101 LWA	
Sound Pressure @ 1m (3ft)	78 db(A)	
Sound Pressure @ 7m (23ft)	69 db(A)	
Engine	CAT C4.4	
Emission Rating	Stage IV	Tier 4
Engine Speed - Max	2000 rpm	
Engine Speed - Min	1000 rpm	
Fuel Tank Capacity.**	400 lt	106 US gal
BEP - Fuel Consumption	24 lt/hr	5.28 US gal/hr

*Open sets exclude fittings

** Fuel tank capacity can be increased with the addition of an auxiliary fuel tank.

Installation drawings are available upon request.

Optional extras

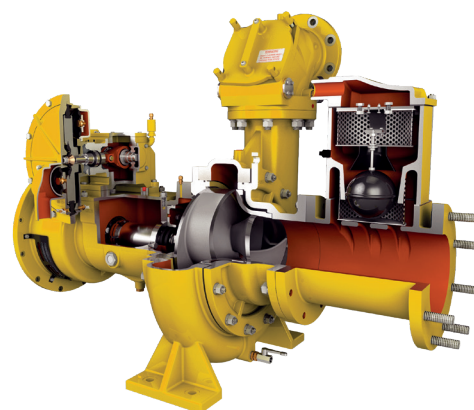
- Training
- Genuine parts kits
- Valves / Fittings
- Pump accessories
- Tanks & filtration
- Pipe stoppers
- Hose / pipework
- Chalwyn valve & spark arrestor

Remote pump monitoring

Selwood SelWatch®

- Remote pump condition monitoring
- Cloud based information management telemetry system
- Monitor pump & engine conditions via Canbus module which links the engine and ECU
- Ability to measure a multitude of pump & engine conditions including:-
 - Discharge & suction pressure
 - Engine speed
 - Fuel conditions
 - Engine temperature

Please note: SelWatch may not be available in all territories. Contact your local Selwood Sales Manager or Distributor for details.



SELWOOD
www.selwood.co.uk

UK Rental
03330 142000

UK Sales
023 8025 0137

International Sales
+44 23 8025 0137

Head Office Bournemouth Road, Chandler's Ford, Eastleigh, Hampshire, SO53 3ZL. T 023 8026 6311 E info@selwood.co.uk