

Solids handling 'S' pump

8 blade impeller

Pump end specification

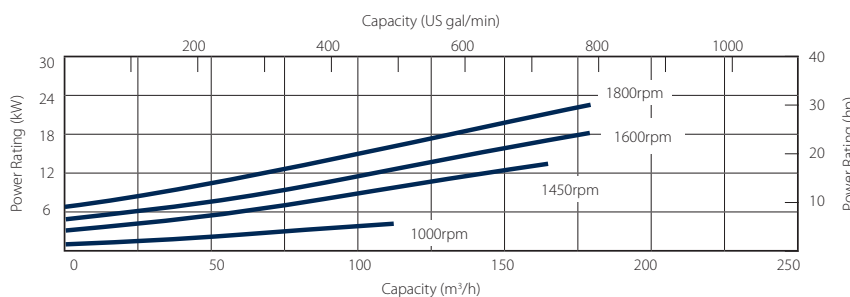
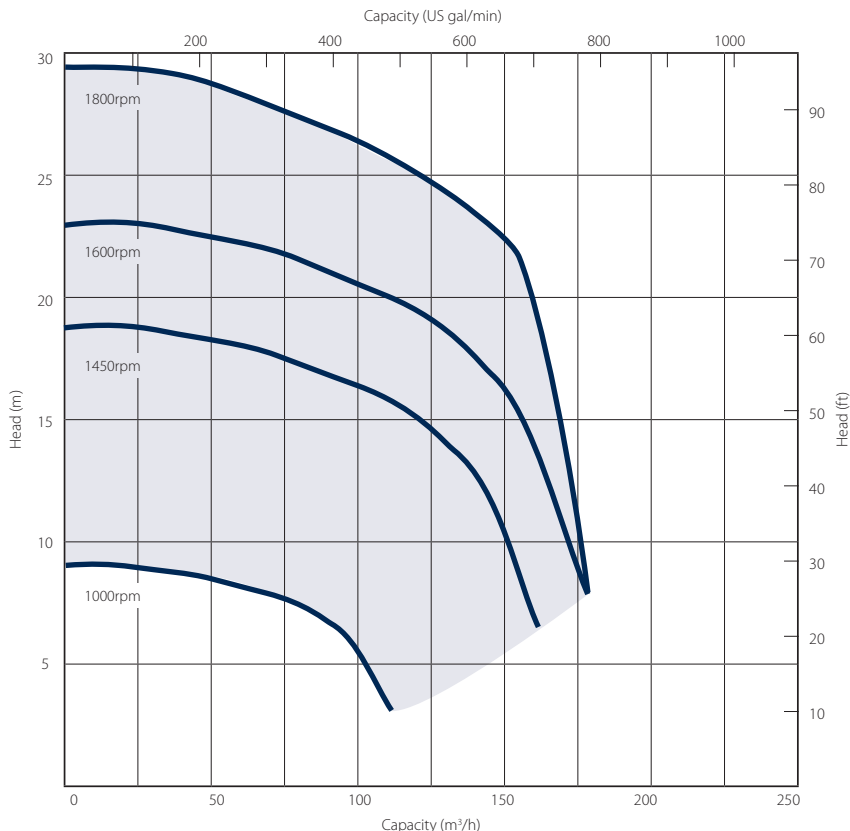
| | Metric | US |
|-------------------|-----------------------|----------|
| Capacity | 180 m ³ /h | 792 gpm |
| Total Head | 29 m | 95 ft |
| Max. Solids Size | 75 mm | 3 in |
| Self Priming Lift | 8.8 m | 28 ft |
| Air Handling | 24 l/s | 50 cfm |
| Selprime® | 2.2 kW | 3 hp |
| Absorbs | | |
| Power Required | 23 kW | 31 hp |
| Pump Speed Max. | 1800 rpm | 1800 rpm |
| Impeller Type | Vortex | Vortex |
| Impeller Blades | 8 | 8 |
| Impeller Diameter | 215 mm | 8.5 in |
| Inlet Port | DN 100 PN6 | 4 in |
| Outlet Port | DN 100 PN6 | 4 in |

Priming method - Selprime®

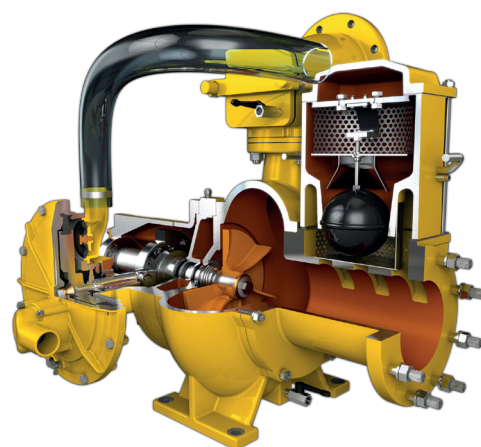
The unique original Selwood self priming system utilising a water tolerant diaphragm air pump. An environmentally friendly design that has none of the problems of oil vapour emissions and oil emulsification associated with other priming systems.

Pump end materials

| | |
|-------------------|--|
| Pump Casing | Grey Iron BSEN 1561 Grade EN-GJL-200 |
| Impeller | Cast Iron BSEN 1563 Grade EN-GJS-450-10 |
| Wear Plates | NA |
| Shaft | Steel BS EN 10277 Grade C40+C |
| NRV Body | Grey Iron BSEN 1561 Grade EN-GJL-200 |
| Mechanical Seal | Ceramic v Silicon Carbide |
| Pump End Bearing | Ball |
| Drive End Bearing | Cylindrical Roller |



Please note: The above curves cover the complete range and ability of the pump unit. Actual performance will be subject to the engine / motor indicated overleaf and medium pumped.



SELWOOD
www.selwood.co.uk

UK Rental
03330 142000

UK Sales
023 8025 0137

International Sales
+44 23 8025 0137

Head Office Bournemouth Road, Chandler's Ford, Eastleigh, Hampshire, SO53 3ZL. T 023 8026 6311 E info@selwood.co.uk

Solids handling 'S' pump build

8 blade impeller

Our 'S Range' pumps are the market-leader when it comes to solids handling.

The vortex-flow design (Seltorque®), Selprime® automatic self-priming, emission compliant engines and ease of operation means trouble-free pumping of

- raw and unscreened sewage
- sludge or slurry
- water with fine and large solids
- water containing rags and fibres

Reducing environmental impact

We are committed to reducing our environmental impact by producing the most efficient equipment we can.

All Selwood Eco5 pumps can run on hydrotreated vegetable oil (HVO) fuel as an alternative to diesel.

Super Silent units include:-

- Quietest pumps on the market – EU directive 2000/14/EC
- Improved canopy design
- Auto stop/start control
- Oil drain kit
- Bulk fuel kit
- Remote pump monitoring



| Standard build | Hatz Super Silent Eco5 Pt No. 1021099S60 | |
|----------------------------|---|----------------|
| | Metric | US |
| Length | 265 cm | 104 in |
| Width | 127 cm | 50 in |
| Height | 181 cm | 71 in |
| Dry Weight | 1750 kg | 3858 lb |
| Gross Weight | 1950 kg | 4299 lb |
| Sound Power | 94 LWA | |
| Sound Pressure @ 1m (3ft) | 72 db(A) | |
| Sound Pressure @ 7m (23ft) | 63 db(A) | |
| Engine | Hatz 3H50TICD | |
| Emission Rating | Stage V | Tier 4 Final |
| Engine / Motor Speed - Max | 1800 rpm | |
| Engine / Motor Speed - Min | 1000 rpm | |
| Fuel Tank Capacity.** | 210 lt | 55 US gal |
| BEP - Fuel Consumption | 5.2 lt/hr | 1.37 US gal/hr |

** Fuel tank capacity can be increased with the addition of an auxiliary fuel tank.

Installation drawings are available upon request.

Remote pump monitoring

Selwood SelWatch®

- Remote pump condition monitoring
- Cloud based information management telemetry system
- Monitor pump & engine conditions via Canbus module which links the engine and ECU
- Ability to measure a multitude of pump & engine conditions including:-
 - Discharge & suction pressure
 - Engine speed
 - Fuel conditions
 - Engine temperature

Please note: SelWatch may not be available in all territories. Contact your local Selwood Sales Manager or Distributor for details.

Optional extras

- Training
- Genuine parts kits
- Valves / Fittings
- Pump accessories
- Tanks & filtration
- Pipe stoppers
- Hose / pipework

SELWOOD
www.selwood.co.uk

UK Rental
03330 142000

UK Sales
023 8025 0137

International Sales
+44 23 8025 0137

Head Office Bournemouth Road, Chandler's Ford, Eastleigh, Hampshire, SO53 3ZL. T 023 8026 6311 E info@selwood.co.uk