

Solids handling 'S' pump

Pump end specification

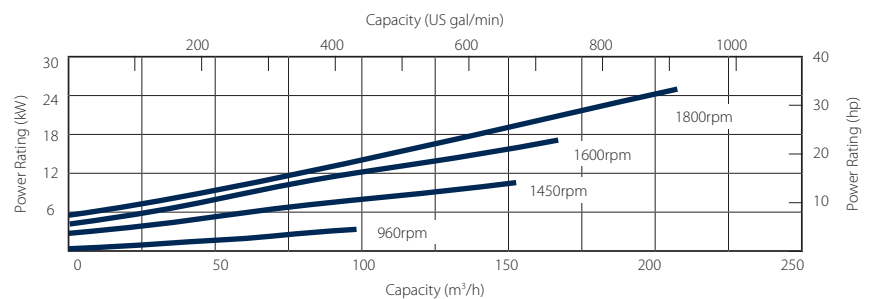
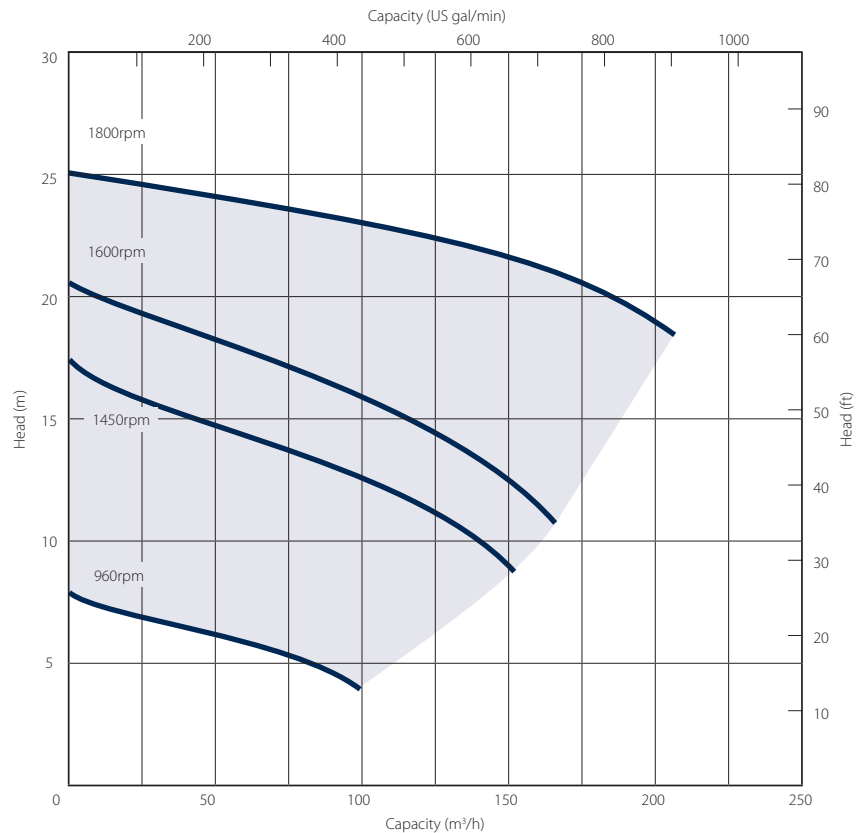
	Metric	US
Capacity	207 m ³ /h	911 gpm
Total Head	25 m	82 ft
Max. Solids Size	75 mm	3 in
Self Priming Lift	8.8 m	28 in
Air Handling	24 l/s	50 cfm
Selprime® Absorbs	2.2 kW	3 hp
Power Required	26 kW	35 hp
Pump Speed Max.	1800 rpm	1800 rpm
Impeller Type	Vortex	Vortex
Impeller Blades	6	6
Impeller Diameter	215 mm	8.5 in
Inlet Port	DN 100 PN6	4 in
Outlet Port	DN 100 PN6	4 in

Priming method - Selprime®

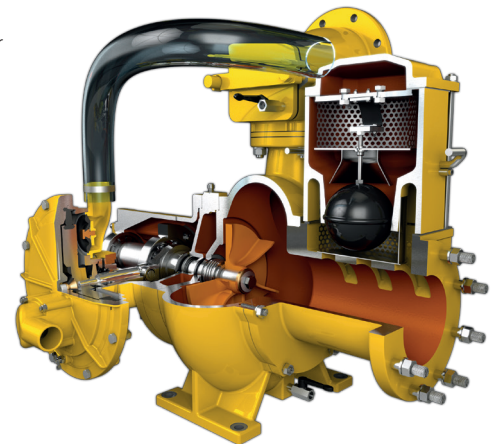
The unique original Selwood self priming system utilising a water tolerant diaphragm air pump. An environmentally friendly design that has none of the problems of oil vapour emissions and oil emulsification associated with other priming systems.

Pump end materials

Pump Casing	Grey Iron BSEN 1561 Grade EN-GJL-200
Impeller	Cast Iron BSEN 1563 Grade EN-GJS-450-10
Wear Plates	NA
Shaft	Steel BS EN 10277 Grade C40+C
NRV Body	Grey Iron BSEN 1561 Grade EN-GJL-200
Mechanical Seal	Ceramic v Silicon Carbide
Pump End Bearing	Ball
Drive End Bearing	Cylindrical Roller



Please note: The above curves cover the complete range and ability of the pump unit. Actual performance will be subject to the engine / motor indicated overleaf and medium pumped.



Solids handling 'S' pump builds

Our 'S Range' pumps are the market-leader when it comes to solids handling.

The vortex-flow design (Seltorque®), Selprime® automatic self-priming, emission compliant engines and ease of operation means trouble-free pumping of

- raw and unscreened sewage
- sludge or slurry
- water with fine and large solids
- water containing rags and fibres

Reducing environmental impact

We are committed to reducing our environmental impact by producing the most efficient equipment we can.

All Selwood Eco5 pumps can run on hydrotreated vegetable oil (HVO) fuel as an alternative to diesel.

Super Silent units include:-

- Quietest pumps on the market – EU directive 2000/14/EC
- Improved canopy design
- Auto stop/start control
- Oil drain kit
- Bulk fuel kit
- Remote pump monitoring



Standard build	Hatz Super Silent Eco5 Pt. No. 1020053S60	
	Metric	US
Length	246 cm	97 in
Width	127 cm	50 in
Height	182 cm	72 in
Dry Weight	1750 kg	3858 lb
Gross Weight	1950 kg	4299 lb
Sound Power	94 LWA	
Sound Pressure @ 1m (3ft)	74 db(A)	
Sound Pressure @ 7m (23ft)	67 db(A)	
Engine / Motor	Hatz 3H50TICD	
Emission Rating	Stage V	Tier 4 Final
Engine Speed - Max	1800 rpm	
Engine Speed - Min	960 rpm	
Fuel Tank Capacity.**	225 lt	60 US gal
BEP - Fuel Consumption	4.7 lt/hr	1.06 US gal/hr

** Fuel tank capacity can be increased with the addition of an auxiliary fuel tank.

Installation drawings are available upon request.

Remote pump monitoring

Deep Sea DSE E800

- Remote pump monitoring
- Cloud based information management telemetry system
- Fully programmable software
- Ability to measure a multitude of pump & engine conditions including:-
 - Engine speed
 - Fuel conditions
 - Engine temperature

Optional extras

- Training
- Genuine parts kits
- Valves / Fittings
- Pump accessories
- Tanks & filtration
- Pipe stoppers
- Hose / pipework